

LEVEL

Q

11Q4  
**STAND-ALONE AIR HOCKEY TABLE  
BY CARROM**

A great game for friends and family! Play surface has a high-output 110-volt electric blower motor. Game includes two black plastic pucks and two controllers. Length: 46", Width: 24 3/4", Height: 32 5/8".



11Q10  
**ALL TERRAIN AIR MATTRESS  
BY AERO**

Queen size.



11Q16  
**HEAVY-DUTY  
6" (150MM)  
BENCH  
GRINDER  
BY DEWALT**

A bench grinder is the ultimate stationary tool for any workshop. Great for cutting and grinding metal, concrete & masonry as well as sharpening tools. Powerful 5/8 HP induction motor for heavy-duty grinding. Industrial cast iron base & motor housing provide durability. Motor runs at 3,450 rpm for high speed material removal.



11Q13  
**LOCO JR.  
TOUR  
PACKAGE  
BY  
DUNLOP**

Apprentice combination graphite golf set, ages 9-12. RH

11Q7  
**ROLL-A-CARTE TABLE BY  
LUMISOURCE**

Moves with you and your work as a combination end table and rolling cart. Features smooth rolling wheels and a black faux leather magazine rack. Glass top: 17.75" diameter; table: 22" wide x 32" high.



11Q19  
**BRISTOL FLATWARE  
STORAGE CHEST  
BY REED & BARTON**

Holds up to 210 pieces, including 12 knives and 12 spreaders. 8-slot drawer rack for extra pieces. Rich Mahogany finish, lined in brown tarnish preventive silver cloth. Antique brass finish drawer pulls, cover lift and side handles. 15 x 11 1/4 x 6" high (Flatware not included.)

11Q18

### TRACKER II METAL DETECTOR BY BOUNTY HUNTER

The Tracker II is one of Bounty Hunter's classic metal detector packages, but with completely redesigned graphics package and electronics for the best features and performance. The Tracker II combines the ease of automatic ground balancing with manual settings for some of the most challenging types of soil. Whether sifting through the sandy beaches for lost items or searching for silver, the Tracker II can do it all! The Tracker II can detect coin-sized objects up to 7 inches deep; larger objects up to 2 feet.



11Q6

### FULL SIZE NIGHT VISION BINOCULAR BY ELITE



### EDGER BY BLACK & DECKER

2-in-1 landscape edger. 2- 1/4 HP.



11Q2

### ECLECTRICS STERLING ALL-METAL DRINK MIXER BY HAMILTON BEACH

Individually hand finished, commercial-grade mixing spindle, stainless steel mixing cup, tilt-back head, 2 speeds, and smudge-free coating.



### RECHARGEABLE, CORDLESS SPEAKERS & DOCK FOR IPOD BY HOMEDICS

This rechargeable, cordless speaker and iPod dock is accompanied by 2 rechargeable wireless speaker stands with charging iPod docking station, premium sound quality, individual volume control, and line in to attach non-docking iPod models, CD players, and other MP3 players. (iPod not included.)



### THERAPIST SELECT SHIATSU MASSAGING CUSHION BY HOMEDICS

Deep kneading Shiatsu massage travels fully up and down the back relieving the tightest knots.



11Q11

### EMPOWER VACUUM BY HOOVER

Features a hush mode, power boost, folding handle, HEPA filter/allergen filtration, powered hand tool, 15" width.



11Q20

### CYLINDER CLOCK BY MOVADO

Another classic from Movado! Cylinder top rotates to view clock, thermometer, hygrometer, and photograph. 7/8" x 3" x 3".

### TAVILLO TABLE BY LUMISOURCE

This lighted table is an innovation that combines a glass table with a light. The tabletop is supported by a plastic cone that serves as a shade and hides an interior metal pole and lighting unit that attaches to the chrome base. Includes an on/off foot pedal switch. 24" diameter x 18" high.



LEVEL

Q



11R18

**MAGDALEN  
BY HOWARD  
MILLER**

This unique 25" gallery wall clock features a Moment in Time™ antique dial framed in wrought iron. Quartz, battery operated movement.

H. 32-3/4" (83cm)

W. 26-1/4" (67cm)

D. 2-1/4" (6 cm)

11R8  
**BARLOW WALL CLOCK  
BY HOWARD MILLER**

Features an asymmetrical back panel finished in Urban Casual. Exposed dial is highlighted by a raised nickel bezel. Quartz, battery operated movement.

H. 30" (76 cm)

W. 8" (20 cm)

D. 3" (8 cm)



LEVEL

R



11R3

**MEN'S WATCH BY  
CITIZEN**



11R6

**LADIES  
WATCH BY CITIZEN**

Jewelry clasp with push button, Swarovski crystal, never needs a battery!

11R13  
**SOLAR COMPUTER  
BRIEF/BACKPACK  
BY GOOD HOPE**

All in one in durable 1680 ballistic nylon, this eco-conscious brief is both functional and environmentally friendly. Boasting a highly innovative Solar Charging System (SCS), this smart brief ensures your small electronic devices are never without power again. The SCS can be charged using an A/C adaptor or with direct sunlight. With a full charge, it provides 8 hours of power. Hidden back straps can easily convert it to a backpack when needed, along with dual carry handles, and a fully adjustable detachable shoulder strap.



11R17  
**CLASSIC RADIO  
BY CROSLEY**

Featuring a 3" full-range studio quality driver and discrete amplification system, you will be amazed by the deep, rich bass and crystal clear highs this compact unit can produce. The AUX IN allows you to hook this unit to your iPod or even your PC! 5.25"x7.5"x5"







11R7

**ANTHONY CLOCK  
BY HOWARD MILLER**

This 77th Anniversary Edition tambour mantel clock is rich in details. A beaded dentil molding surrounds the base, accenting the carved side scrolls and burl veneered front panel.

H. 8-1/2" x W. 15-3/4" x D. 5-1/4"



11R21 PINK  
11R22 BLUE  
11R23 BLACK  
11R24 BROWN

**DESTINATION VINTAGE  
UPRIGHT LUGGAGE  
BY GOODHOPE**

Travel in sleek sophistication with this classic case made of suede-like brushed twill and luxury full-grain leather set off by a cream saddle stitch. 21" high x 14" long x 7 1/2" wide.



11R10

**MAMBO SUB-DIVER  
BY FESTINA**



11R11

**GAZEBO SCREEN HOUSE  
BY WENZEL**

Base Size 11'6" x 10', 2 Inverted 'I' Style Doors. Table and chairs not included.



11R1

**FAMILY DOME TENT  
BY AWARD OF EXCELLENCE**

This family dome tent lets you experience all the fun of camping while still protecting yourself from the elements. Roomy, durable and easy to assemble. A "must" for all family camping enthusiasts.



11R9

**DIVERSEY FLOOR LAMP  
BY LUMISOURCE**

Partitioned plexiglass blades beautifully refract light. Powder-coated silver finish. 13" wide x 64" high



11R2

**3 POD AEROGARDEN® CHEF IN A BOX  
BY AEROGROW**

The world's first indoor Smart Garden! 3 Pod AeroGarden® comes with the Chef in a Box herb seed kit, the Herb'n Serve™ salad dressing and marinade maker, and the Herb It Up! cooking guide.

11R14

**PROGRINDER™ MEAT  
GRINDER**

**BY VILLAWARE**

375 watts of power, elegant stainless steel housing with black accents, on/off/reverse switch relieves jamming, resettable fuse, steel junction parts, fine medium & coarse cutting blades, sausage stuffing funnel and sausage separator.



11R19

**GENUINE LEATHER  
CORRAL CANYON  
CONVERTIBLE  
DUFFLE/BACKPACK  
BY CANYON OUTBACK**

This uniquely designed duffel has hidden backpack shoulder straps for hands-free carrying of heavy loads. The bottom is double padded for comfort when carried as a backpack. There is a large front pocket, and the luggage tag is included.

LEVEL

R



11S4

**HATTERAS CLASSIC COLLECTION-  
DELUXE COTTON ROPE HAMMOCK  
BY HATTERAS HAMMOCKS**

Recline next to the ones you love in a spacious and comfortable cotton rope hammock. Using 1000 feet of cotton rope, the hammock body is constructed using a double-latch design adding greater comfort and strength. Hand-tied bowline knots are used, designed to tighten when weight is applied. Three-ply twisted premium cotton rope is used for superior comfort. Designed to support up to 450 lbs. (Stand not included.)



11S7

**THE BIG "O" (60")  
INFLATABLE  
BY CONNELLY**

The heavy duty PVC bladder is now fully encased in 840 Denier for durability and shape retention. The flat bottom provides good speed and pop off the wake or outside waves.



11S8

**HEAVY DUTY  
RECIPROCATING SAW  
KIT  
BY BLACK & DECKER**

11S13  
**PERSPECTIVE  
FLATWARE SET  
BY REED &  
BARTON**

This contemporary, continental-size stainless steel flatware pattern features a smooth, highly polished finish with a simple double band at the throat. The 65 piece set includes twelve 5-piece place settings and a 5-piece hostess set.



11S5

**GOLD BALLOTIN  
CHOCOLATE  
ASSORTMENT BY GODIVA**

105 pc. assortment of milk, white, and dark chocolates including ganache, creams, caramels, and nuts.



11S17

**18 VOLT  
12" CORDLESS  
GRASSHOG  
TRIMMER/EDGER  
BY BLACK & DECKER**

12" cut path cuts more area per charge than other cordless trimmers. AFS™

System uses centrifugal force to automatically advance line when needed. Groom 'N' Edge™ converts from trimming to edging with the touch of a button. Cordless electric trimmer provides hassle free trigger starting. Adjustable auxiliary handle adjusts to user's height.



11S11

**TIP-TOP LAMP BY  
LUMISOURCE**

180° adjustable tipping shade. Power-coated black and chrome pole allows adjustable height from 59" to 78" tall. 22" wide

LEVEL





11S9  
**VS COMPACT  
JIGSAW  
BY BLACK &  
DECKER**



11S12  
**CRESCENDO II BY REED &  
BARTON**

A dramatic pinstripe design distinguishes the handle of this grand stainless steel pattern, which culminates in an elegant triple band at the throat. The 65 piece set includes twelve 5-piece place settings and a 5-piece hostess set.



11S6  
**VS RANDOM ORBIT  
SANDER**

Variable speed, uses quick changing hook-and-loop abrasive discs, random-orbit action, efficient through-the-pad dust collection system.

11S16  
**REFRACTOR TELESCOPE  
BY ELITE BRANDS**

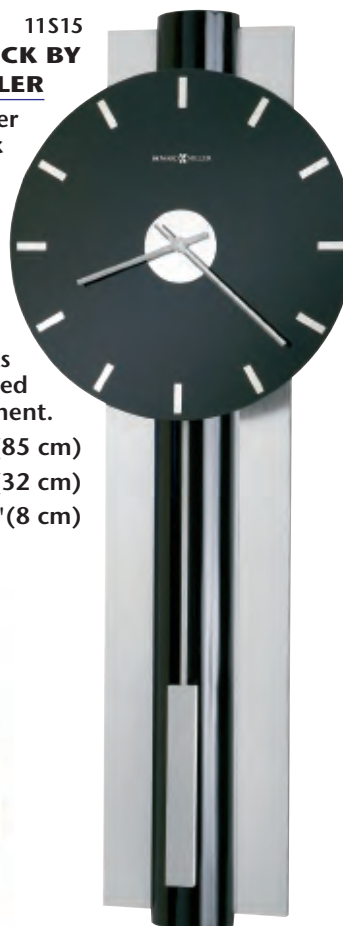
Rokinon scope features premium grade 50mm lens with high gloss aluminum tube focal length 700 mm, magnification 32x to 525x, 5x24 finderscope, 1.5x erecting lens, and diagonal mirror 1.25".



11S15  
**HUDSON WALL CLOCK BY  
HOWARD MILLER**

Features a half-round center finished in high gloss black lacquer with contrasting brushed nickel finished side panels. Black glass dial features polished chrome bar style hour markers and straight, brushed nickel finished hands. A rectangular pendulum, finished in brushed nickel, complements the dial. Quartz, battery operated movement.

H. 33-1/2"(85 cm)  
W. 12-1/2"(32 cm)  
D. 3-1/4"(8 cm)



11S14  
**PREMIER DURASUEDE AIR  
MATTRESS BY AERO**

Twin size



11S3  
**PROVINCIAL FLATWARE STORAGE  
CHEST  
BY REED & BARTON**

This handcrafted chest holds up to 180 flatware pieces. It has a handsome mahogany finish, a drawer that offers storage for a wide variety of pieces, and silver ornamental handles. The lining is brown, tarnish-preventive silver cloth to protect your pieces. 17 x 11 1/2 x 6 3/4"H (Flatware not included.)

LEVEL







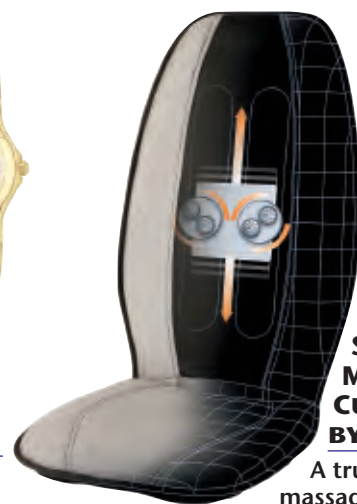
11T16  
**WING TWO  
INFLATABLE  
BY CONNELLY**

Back by popular demand, the Wing Two's 76" wing span and side by side seating give you and your copilot plenty of room. Surprisingly fast and smooth for such a big tube.



11T6 MEN'S  
11T7 LADIES  
**TIMELESS DESIGN  
WATCH BY CITIZEN**

Safety fold over clasp with push button, never needs a battery!



11T14  
**THERAPIST  
SELECT  
SHIATSU  
MASSAGING  
CUSHION  
BY HOMEDICS**

A true Shiatsu massage experience, guaranteed to melt away tension, muscle pain and fatigue.



11T11  
**TRUE AIR IONIC  
AIR PURIFIER  
BY  
HAMILTON  
BEACH**

Up to 10X more effective than other Ionic air purifiers. Effective performance for large rooms up to 180 sq feet. No filter replacement—just vacuum clean. Air quality sensor. Quiet operation. Energy efficient. Style that fits your lifestyle.

11T1  
**IONIC DETOX SPA  
ENERGIZER SOLO  
BY VIATEK**



11T5 LARGE  
11T8 XLARGE  
**DUCK**

**TRADITIONAL  
COAT BY  
CARHARTT**

Ready for the cold! Tough 12-ounce, top quality cotton duck lined with nylon quilted arctic-weight polyester insulation. Plenty of room with two flapped outside chest pockets, two inside pockets, and two large outside pockets. Choose Large or Xlarge.



11T2  
**LANGELAND BY  
HOWARD MILLER**

This stately bracket-style mantel clock features reeded columns with carved top and bottom caps, and a decorative molding at the top and bottom of the multitiered base.

H. 13-1/2" (34 cm)  
W. 10-1/2" (27 cm) D.  
4-1/2" (11 cm)



11T18  
**CHOCOLATE  
LOVER'S TOWER BY  
GODIVA**

Chocolate assortment ...  
mmmmmm!

LEVEL

T



11U9

### **POWERLIFT SET BY DUNLOP**

Powerlift 3/1/7 set with graphite woods/hybrid 3, 4-PW steel shafts, MRH.



11U3

### **PEATAIL TIFFANY DESKLAMP BY PAUL SAHLIN**

Double socket table lamp. Florentine base. 12"W x 16"H x 12" D



11U5

### **UPTOWN BAR STOOL BY LUMISOURCE**

Sleek and elegant curves highlight this contemporary bar stool. Low-rise back and extra wide foot rest are featured. Seat adjusts hydraulically from 19 to 29 inches in height. Polished chrome base. 13" wide x 35" high (extended).

11U6

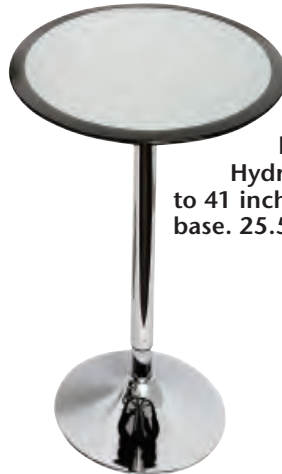
### **LUIS CLOCK BY HOWARD MILLER**

This attractive double sided wall clock is designed for indoor or outdoor use. A thermometer located above the six position indicates the temperature in °F. H. 19-1/2" (50 cm). W. 21-1/2" (55 cm). D. 6-1/4" (16 cm.)



11U4

### **LADIES WATCH BY CITIZEN**



11U11

### **RIBBON BAR TABLE BY LUMISOURCE**

Silver fiberglass table features black colored rim accent. Hydraulic lever adjusts table from 26 to 41 inches in height. Polished chrome base. 25.5" wide x 41" high (extended).



11U2

### **1 1/2" VSR DUAL RANGE**

**HAMMERDRILL BY BLACK & DECKER**



11U7

### **PREMIER CLASSIC AIR MATTRESS BY AERO**

Full size

11U10

### **THERAPIST SELECT QUAD-ROLLER BY HOMEDICS**

Massaging cushion with traveling shiatsu & rolling up and down the back, spot shiatsu, and width adjustment.



11U1

### **CORDED RECIPRO SAW**

9 AMP motor to handle the most demanding jobs. Tool-less blade change and shoe adjustment. Variable speed trigger allows you to match the speed of the blade to the specific application. 0-2,800 strokes per minute, length of stroke: 28m.



LEVEL

U





11V2  
**7-1/4" LIGHTWEIGHT  
CIRCULAR SAW KIT  
BY BLACK & DECKER**



11V12  
**MINI MITT  
CHAIR BY  
LUMISOURCE**

Give yourself a big hand! The mini mitt is perfect for toddlers or as a bed for your favorite pet. 17" wide x 21" high.



11V6  
**LADIES WATCH  
WITH CHARM  
BRACELET BY  
CITIZEN**

Crystal accented case and bracelet feature Swarovski crystal, lobster claw clasp, never needs a battery!



11V1  
**REFRACTOR  
TELESCOPE BY ELITE  
BRANDS**

Rokinon scope features premium grade 50mm lens with high gloss aluminum tube focal length 900mm, magnification 36x to 675x. Includes 5x20 finderscope, 1.5x erecting lens, diagonal mirror 0.965", SR4, H12.5, and 3xBarlow eyepieces.



11V20  
**MARTIME-  
NORTHLAND MANTEL  
CLOCK BY HOWARD  
MILLER**

Quartz, dual chime movement plays Westminster or Beethoven chimes, and features volume control and automatic nighttime chime shut-off option. Finished in Worn Black on select materials, hardwoods and veneers. H. 10-1/8" (26 cm). W. 17" (43 cm). D. 5-3/8" (14 cm).



11V4  
**LADIES  
WATCH  
BY CITIZEN**

11V9  
**AEROGARDEN® DELUXE WITH  
MASTER GARDENER KIT BY  
AEROGROW**

The world's first indoor Smart Garden! AeroGrow's newest technology delivers twice the light (in Photon flux) with a new lamp hood, three deluxe grow bulbs and a 24-hour light option. Also includes a 24-inch extendable lamp arm for growing full-sized tomatoes, cucumbers, bell peppers and more. A Master Gardener Kit is included with everything needed to plant and grow your own seeds for a full year! (Seeds not included.)



LEVEL

V



11V5

### FOODSAVER ADVANCED DESIGN SPECIALTY KIT BY VILLAWARE

Simpler, sleeker and smarter!  
Taking the favorite FoodSaver  
features and making them better  
than ever. Flips up to conserve  
counter space when not in use.  
Easy, intuitive operation.



11V15

### ODYSSEY COMBO SKIS

Water skis for the recreational skier.  
Wide tails and shallow narrow tunnels  
provide control, stability, and smooth  
turns. The Odyssey accommodates many  
different skill levels and includes a  
removable crossbar to aid in starts. 68"  
in length.

11V19

### MARTIME-ARENDAL MANTEL CLOCK BY HOWARD MILLER

Quartz, dual chime  
movement plays Westminster  
or Beethoven chimes, and  
features volume control and  
automatic nighttime chime  
shut-off option. Finished in  
Tuscany Cherry on select  
hardwoods and veneers. H.  
16-1/2" (42 cm). W. 6-  
1/2" (16 cm). D. 4-1/2" (11



cm)

11V29

### FLEUR DE LIS FULL/QUEEN BED SET BY DONNA SHARP

Beautiful white whole-cloth quilt  
with traditional Fleur de Lis pattern  
in black, full/queen size, 90" x 90".  
White decorative quilted pillow, 16"  
x 16". White quilted shams, 28" x  
20".



11V31

### BABY BOY CRIB AND ACCESSORY SET BY DONNA SHARP

Crib set features deep blues,  
greens, & browns making up a  
backdrop of a midnight sky. Quilt:  
35" x 45", Bumper: 160" x 10",  
Bedskirt: 27" x 52" x 14", Crib  
Sheet: 27" x 52" x 10", Teddy  
Bear: 8". Coordinating Baby Bag  
Tote (19.5" x 16.5" x 5.5") in  
Colonial Patch pattern of blues,  
reds, & yellows (not pictured).  
Perfect for a baby boy!



11V22

### 40" TOWER CLOCK BY RIVER CITY

11V30

### EMILY BABY GIRL CRIB AND ACCESSORY SET BY DONNA SHARP

Fun flower pattern with  
coordinating pink polka dots.  
Bumper: 160" x 10", Bedskirt:  
27" x 52" x 14", Crib Sheet: 27"  
x 52" x 10". Patch and applique  
pattern cotton quilt with bright  
shades of pinks and greens, 35"  
x 45". Adorable teddy bear to  
match crib set and quilt, 8".  
Matching patched baby bag  
tote, 19.5" x 16.5" x 5.5".



11V21

### MAMBO WATCH BY FESTINA

Stainless steel  
case, pink leather  
strap with  
deployment  
clasps.  
Chronograph and  
analog water-  
resistant to 165  
feet.



LEVEL

V



11W5  
**"BANDMASTER"  
TURNTABLE  
BY CROSLEY**

The Bandmaster handles up to 6 records of any size and is fully automatic to give you hours of listening enjoyment. This unit also includes an AM/FM radio and CD player.



11W17  
**MINI FOLDING  
POOL TABLE BY  
CHH**

It even comes with accessories!

44"L x 24"W x 29"H



11W34  
**PEATAIL TIFFANY  
FLOOR LAMP  
WITH SPIRAK  
BASE BY  
PAUL SAHLIN**

58"H x 12"W

LEVEL  
**W**

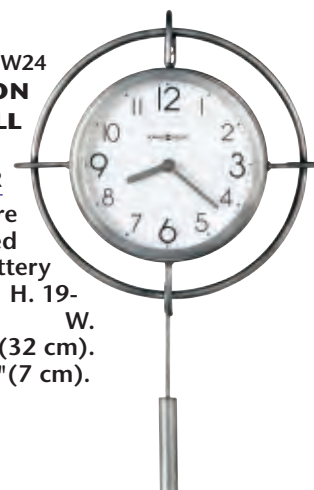


11W11  
**BOOM CHAIR BY LUMISOURCE**

Features interactive vibration motors, a pair of 3" two-way speakers, and an adjustable headrest. Rugged canvas surface. Storage pockets. Folds for convenient storage. 27" long x 17" wide x 31" high.

11W24  
**MARTIME-DENNISON  
METAL WIRE WALL  
CLOCK BY  
HOWARD MILLER**

Engaging bent metal wire wall clock is finished in aged satin nickel. Quartz, battery operated movement. H. 19-3/4"(50 cm).



W. 12-1/2"(32 cm).  
D. 2-3/4"(7 cm).

11W30  
**UPRIGHT 8 LB VAC BY  
ORECK**

Lightweight - only 8 lbs! Easy-On disposable bag attachment dock. Hypo-Allergenic top-fill design traps particles as small as 1/100th the width of a human hair. Virtually no after-dust. Adjusts automatically for any surface. Double-helix brushes whirl at 6,500 rpm, twice the speed of other brands. Headlight illumination.



11W9  
**QUICK DRAW II METAL DETECTOR BY BOUNTY  
HUNTER**



The Bounty Hunter Quick Draw II metal detector packs in powerful features like an advanced computer circuit for superior discrimination and control. You can even sort recent trash metals from historical treasure with the

Quick Draw II three-level iron discrimination. The unit provides an LCD display with both target ID and depth readout to make your time and treasure hunting more productive. The Quick Draw II can detect coin-sized objects up to 8" deep; larger objects up to 3 feet.



11W25

### COMFORT ZONE RAISED AIR MATTRESS BY AERO

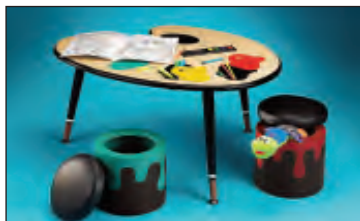
Full size



11W7

### PAINT TABLE WITH STOOLS BY LUMISOURCE

A pint-sized Picasso or Monet will feel inspired by this painter's palette-shaped table with colorful paint splatter storage compartments and two paint can stools that double as a secret hide-away for books and toys. Table is 33" long x 24" wide x 19" or 22" high. Stools are 9.5" diameter x 11" high.



11W14  
**LADIES  
WATCH  
BY CITIZEN**

11W13  
**MEN'S  
WATCH  
BY CITIZEN**



11W29  
**WATERLESS COOKWARE  
SET BY CHEF'S SECRET®**

15-piece, 9-element stainless steel cookware.



11W10

### HAMILTON BEACH ELECTRICS STERLING ALL- METAL STAND MIXER BY HAMILTON BEACH

Individually hand finished. Professional 2-way rotating mixing action. Stainless steel 4.5 quart bowl. Quick-release tilt-up head. Pouring shield. 3 mixing accessories. Locking bowl. 400 watts of power. Smudge-free coating.

### 9.6V 3/8" CORDLESS DRIVER DRILL WITH 23PC ULTRALOK SET

DRILL: 9.6V (1.3Ah) Cordless Driver-Drill, compact tool body and lightweight design, 2-speed gear selection. 16 torque settings plus drill mode, all metal transmission. Includes charger, tool case, and two batteries. BIT SET: The best fast connect accessory. Includes connector, drill bits, "shorty" finder/driver, sockets, screw heads.



11W1



11W12

### FREESTYLE PORTABLE GRILL BY NAPOLEON

Ideal for boating, RVing, tailgating, camping & condo living. Commercial grade 304 all stainless steel construction. Electronic ignition. Operates on a 1 lb. propane cylinder. Large 215 sq. in. grilling surface with additional 105 sq. in. fold away warming rack. Removable drip pan for easy clean-ups.

11W8

### CYNTHIA CLOCK BY HOWARD MILLER

Elegant leaf motifs adorn the bezel and front wrap-around legs. Floral and vine overlays and decorative molding further enhance the base. H. 12-1/4" (31 cm). W. 15-3/4" (40 cm). D. 7" (18 cm).



### MARTIME-CORTEZ CHIMING WALL CLOCK BY HOWARD MILLER

Quartz, dual chime movement plays Westminster or Beethoven chimes, and features volume control and automatic nighttime chime shut-off option. H. 25-1/2" (65 cm). W. 10" (26 cm). D. 5-3/4" (15 cm)

11W15



LEVEL

W



11X11  
**ULTRA STEP 5-8  
FIBERGLASS  
"ADJUSTABLE"  
STEPLADDER  
BY LITTLE GIANT**

This revolutionary new ladder adjusts from 5' to 8' as a single sided stepladder. It also adjusts for stairs and unlevelled surfaces, and can be used in the parallel (or 90 degree) position against a wall. The Ultra Step is Type 1A (300lb) rated.



11X9  
**FAMILY CAMPING KIT  
BY STANSPORT**

8 x 8 Dome tent with full rain fly. 4 - 3lb rectangle sleeping bags (33" x 75"). 1 - Double mantle propane lantern. 1 - Cinsa speckled enamel tableware set (4 Person). 1 - 43 piece First Aid Kit.



11X10  
**LADY DUNLOP  
BY DUNLOP**  
4/7 all graphite,  
LRH



11X6  
**MARTIME-WORLD  
TIME GALLERY II  
BY HOWARD  
MILLER**

The aged white dial of this 25" gallery wall clock offers aged black Roman numerals and hands. Quartz, battery operated movement. Finished in Embassy Cherry on select hardwoods and veneers.  
D. 2-3/4" (7 cm). Dia. 25" (63 cm).



11X5  
**GREER BY HOWARD MILLER**

This wall clock offers a decorative overlay above the arched glass. Dentil molding accents the pediment and base.  
H. 34" (86 cm)  
W. 12-1/2" (32 cm)  
D. 8-1/2" (26 cm)

11X2  
**MARTIME-DORCHESTER  
CHIMING WALL CLOCK  
BY HOWARD MILLER**

Features a turned finial and antique spun brass pendulum. Antique white dial offers black Arabic numerals and spade hands. Quartz, dual chime movement plays Westminster or Beethoven chimes, and features volume control and automatic nighttime chime shut-off option. Finished in Worn Black on select materials, hardwoods and veneers. H. 29-1/2" (75 cm).  
W. 9" (23 cm).  
D. 4-3/4" (12 cm)



11X1  
**MEN'S WATCH  
BY CITIZEN**

Retrograde perpetual calendar, alarm, never needs a battery!

11X8  
**WINDTUNNEL™ BY  
HOOVER**

Self Propelled WindTunnel™ Bagless vacuum picks up more dirt than any other upright... period! Self-propelled in forward and reverse, long-life H.E.P.A. filter, and 15" cleaning width.



11Y6  
**COMPACT 1/2" 18V  
 CORDLESS  
 HAMMERDRILL KIT  
 BY DEWALT**

1/2" single sleeve ratcheting  
 chuck reduces bit slippage.  
 Dual speed range 0-  
 500/0-1700 rpm, 0-  
 8500/0-29,000 bpm.



11Y3  
**TRIPOD FLOOR  
 LAMP BY  
 LUMISOURCE**

3 slender polished  
 chrome poles focus  
 the eyes to the  
 gracefully curved  
 glass barrel shade.  
 Dimmer switch. 20"  
 wide x 68" high.



11Y2  
**MEN'S  
 WATCH  
 BY CITIZEN**

11Y1  
**10" COMPOUND  
 MITER SAW BY  
 DEWALT**

Custom cut your trim work  
 with this 10" compound  
 miter saw. Heavy-duty and  
 professional quality make  
 this saw  
 perfect for  
 any  
 handyman.



11Y7  
**SYMPHONY OCTAVE CEILING  
 LAMP  
 BY LUMISOURCE**

Features an elongated flute scone, faux  
 crystal discs that catch the light and cast  
 colorful accents. Black crystal accents  
 connected by twisting chrome wire are  
 reminiscent of piano keys. 38" diameter  
 x 9" high

LEVEL

Y



LEVEL

Z



11Z32

### ULTRA CHEF GAS GRILL BY NAPOLEON

Up to 69,500 BTU's (19.6kw). LIFT EASE™ roll-top lid features stainless steel temperature gauge with ACCU-PROBE and cast aluminum "no-rust" sides. Electronic ignition (battery included) starts your grill quickly. Easy to use ergonomic knobs for precise heat control. Full width removable drip pan channels excess drippings into a removable grease cup for easy clean-up.



11Z33

### 18 VOLT NI-MH MFORCE COMBO KIT BY MAKITA

Nickel Metal Hydride power. Runs 30% longer than competitive brands. Includes 1/2" drill driver, 6-1/2" circular saw, reciprocating saw. Accessories include flashlight, 2 batteries, charger, and plastic carrying case.

11Z15

### 22' CLASSIC LADDER WITH WORK PLATFORM BY LITTLE GIANT

No other ladder compares - One Ladder Does it All. The Little Giant Ladder System® is four to five times more durable than ordinary ladders. The Little Giant is made of heavy-wall 6005-T5 aluminum. And while it possesses a workload rated capacity of 300 pounds, it has been tested to withstand four times that amount without structural failure. Little Giant Ladders are versatile. The Model Twenty-Two replaces five different size "A" frame ladders, nine different size extension ladders, two scaffolding trestles with five heights, ten staircase ladders (for working on uneven surfaces) and four 90 degree ladders (for getting closer to walls and etc.).



11Z12

### PATIOFLAME™ BY NAPOLEON

60,000 (17.6kw) variable BTU's. All stainless steel construction. Totally weather resistant. Easy installation. Approved for use on wooden decks, stone, or brick patios and concrete.



11Z29

### CARINA WATCH BY JEAN CAREL

Genuine Italian Crocodile strap, white mother of pearl dial, water resistant, 95 diamonds - 1/2 carat weight, comes with black and pink straps that are interchangeable!



11Z34

### CARINA WATCH BY JEAN CAREL

Stainless Steel Bracelet, white mother of pearl dial, water resistant, 95 diamonds - 1/2 carat weight!



11Z27

### PATIO HEATER BY NAPOLEON

Radiant gas patio heater, heats up to a 20' circle. 100% Safety shut-off. Piezo ignition. Propane fueled, portable.

11Z56  
**MARTIME COCO  
FLOOR CLOCK BY  
HOWARD MILLER**

This curvaceous floor clock features a hinged top door with convex glass that frames the dial.

The hinged, locking lower door has a complementing convex glass crystal that reveals the pendulum bob. The lower door glass allows the weights to be viewed.

H. 88-1/2" (225 cm).

W. 24" (61 cm).

D. 13-1/4" (34 cm).



11Z45  
**ELECTRIC FIREPLACE  
BY NAPOLEON**

The ultimate enjoyment of a fireplace with one simple switch. Safe, easy installation in minutes. Installs in any room in your house, condo or apartment. Zero clearance installation. Convenient option of operating with or without heater. Operates on as little as 2 cents per hour. Adjustable flame control. Patented technology and unique design offering the most realistic flame pattern available. 100% efficient. No venting required. Dark Oak Finish.

11Z26  
**PRESTIGE I GAS GRILL  
BY NAPOLEON**

Up to 56,000 BTU's (16.4kw). LIFT EASE™ roll-top lid features stainless steel temperature gauge with ACCU-PROBE and cast aluminum "no-rust" sides.

Electronic ignition (battery included) starts your grill quickly. Easy to use ergonomic knobs for precise heat control. Full width removable drip pan channels excess drippings into a removable grease cup for easy clean-up.



11Z23  
**IJOY® CHAIR  
BY INTERHEALTH**

Ijoy®130 does what you tell it. Each of four powerful massage modes can be programmed to give you the touch you prefer. The controller has three different programmed massage sessions of 15 minutes, which means you can kick back and enjoy a programmed massage whenever you feel like it.



11Z42  
**MARITIME-COGNAC: HIDE-A-BAR BY HOWARD MILLER**

This clever Hide-A-Bar™ offers a revolving door for convenient wine & spirits storage and serving area in a small space. A drop-down shelf features a laminated surface for mixing and serving drinks. The lower drawer stores a double layer of wine bottles, with a capacity of ten bottles. Lightly distressed finish in Hampton Cherry on select hardwoods and veneers. Auto-on Light is a "smart" light switch that turns on automatically when a door is opened, and off when closed. Adjustable levelers under each corner provide stability on uneven and carpeted floors. Hanging stemware rack keeps stemware handy.

H. 54" (97 cm). W. 28" (71 cm). D. 19-3/4" (50 cm)



11Z55  
**MARTIME-FREDRICK  
FLOOR CLOCK  
BY HOWARD MILLER**

The cabinet is finished in Worn Black with brown undertones with accent panels in the lower door and sides finished in Vintage Umber. The distinctive dial features Arabic numerals with a Worn Black and Vintage Umber background that complements the cabinet. Hour and minute hands are finished in an antique brass.

H. 78" (198 cm).

W. 22-1/4" (57 cm).

D. 13-3/4" (35 cm).



LEVEL

Z



11Z47  
**PRESTIGE  
II GAS GRILL  
BY NAPOLEON**

From 82,500 BTU's (23kw) down to precise 6,000 BTU's (1.7kw) for more delicate cuisine. Space saving LIFT EASE™ roll-top lid. Electronic ignition.



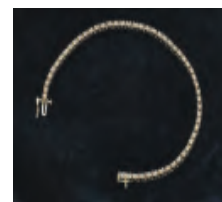
11Z8  
**MODERNO™ PRIMA™ ESPRESSO MAKER  
BY VILLAWARE**

Retro stainless steel design, ground coffee and pod portafilter handles included, free lily coffee pods included, milk steamer/frother, pump driven boiler, 15 bars of pressure, removable 0.7 liter water tank, cup warmer, built-in drip tray, espresso temperature gauge, high pressure safety valve, on/off and ready lights, cord storage, 1000 watts, made in Italy.



11Z44  
**FONTAINE CABINET  
BY HOWARD MILLER**

The top surface and drawer fronts feature a rich, hand-tooled leather for a handsome, textured appearance. The two drawers feature quality details such as dove-tailed construction and metal drawer guides. The glass doors feature ornate metal scrolled leaf inserts, which partially conceal the stackable metal wine racks and adjustable shelves inside. Storage for up to 28 bottles of wine. Locking door for added security. H. 38" x W. 51" x D. 20"



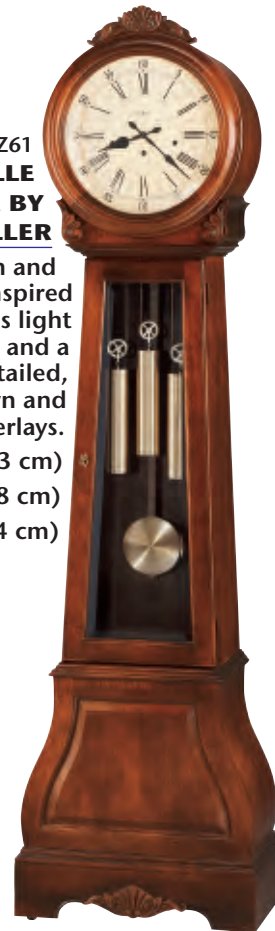
11Z17  
**GENUINE DEBEERS  
DIAMOND TENNIS BRACELET**

One carat total diamond weight tennis bracelet set in genuine 14kt gold.



11Z5 MOCHA  
11Z6 OATMEAL  
**DURACORD ROCKER BY  
HATTERAS HAMMOCKS**

This designer Brazilian chair from the Hatteras Outdoors® collection is the ultimate single rocker. Constructed of cumaru wood, a South American hardwood that is very durable and naturally resistant to a harsh climate. Because it is non-porous and highly dense, it does not allow water and moisture to penetrate the wood. The woven rope seat is made using DuraCord® rope and has been engineered to resist mold and mildew while maintaining a cotton-like feel.



11Z61  
**LA ROCHELLE  
FLOOR CLOCK BY  
HOWARD MILLER**

This French and Scandinavian inspired floor clock features light distressing and a beautifully detailed, removable crown and shell overlays.

H. 84" (213 cm)  
W. 22-3/4" (58 cm)  
D. 13-1/4" (34 cm)



11Z40  
**MERLOT VALLEY CABINET  
 BY HOWARD MILLER**

With a distressed Vintage Umber finish and Worn Black finished posts, this demilune (half-moon) console offers plenty of character. The black granite top offers an appealing surface for serving beverages or food. The front door features curved glass. A wood wine rack with a capacity for 18 bottles and a wood stemware rack are included within the cabinet. The granite top is removable for easy handling. Locking door for added security.



H. 38" x W. 44" x D. 21 3/4"

11Z35 VANILLA WHITE  
 11Z36 CHILI RED  
**MARTIME-HANNOVER FLOOR CLOCK  
 BY HOWARD MILLER**

**This curvaceous clock makes a stylish fashion statement for your home decor.** Automatic nighttime chime shut-off option. Illuminated dial for viewing in a darkened room. Adjustable levelers under each corner provide stability on uneven and carpeted floors.

H. 79" (201 cm). W. 21-1/4" (54 cm). D. 11" (28 cm)



11Z41  
**PEDAL BOAT BY PELIKAN**



child.

How fun is this?! A pedal boat with canopy for those lazy days at the lake. Features adjustable seat backs (so riders of any height can reach the pedals) and a step-on cooler lid. 7' long, max capacity-550 lbs., boat weight is 100 lbs, seating for 2 adults and 1

11Z24  
**LADIES 107 WATCH  
 BY JEAN CAREL**

86 Diamonds totaling .43 carat weight, mother of pearl dial featuring 10 diamonds, solid stainless steel buckle with seven lustrous diamonds. Supple black crocodile strap hand crafted in Italy.



11Z25  
**LADIES 107 WATCH  
 BY JEAN CAREL**

86 Diamonds totaling .43 carat weight, mother of pearl dial featuring 10 diamonds, solid stainless steel buckle with seven lustrous diamonds. Supple pink crocodile strap hand crafted in Italy.

11Z37  
**CUCKOO  
 CLOCK  
 BY  
 RIVER  
 CITY**



11Z59  
**"HUMAN TOUCH"  
 MASSAGE CHAIR**

"Human Touch" has dual massaging discs that feel like fingers and thumbs! Replicates four primary back massage techniques used by trained therapists. Calves and legs are massaged through plates in leg of chair.

LEVEL

Z

LEVEL

Z



11Z48  
**SENECA FALLS CABINET  
BY HOWARD MILLER**

The drop-down wooden door features a moisture resistant laminate surface which provides a handy shelf for serving food and mixing cocktails. A large center drawer features metal guides, and provides storage for utensils, bar cloths, and other items. The lower cabinet features a wooden wine rack with storage capacity of 11 bottles. Auto-on Light is a "smart" light switch that turns on automatically when a door is opened, and off when closed. H. 66" x W. 48" x D. 19"

11Z57

**SARANAC  
CABINET  
BY HOWARD  
MILLER**

This impressive bar features carved columns with acanthus leaf column caps and a carved gadroon molding around the base. The granite top is held in place with Velcro™ so that it can be removed for handling. Laminated, hinged prep shelf inside one top drawer. Matching granite cutting board inside the other drawer. Insulated, stainless steel bin for holding ice or chilling wine. H. 42-1/2" x W. 68" x D. 27"



11Z64  
**X2  
ADVENTURE  
BY SEGWAY**

11Z53  
**BENJAMIN FLOOR  
CLOCK BY HOWARD  
MILLER**

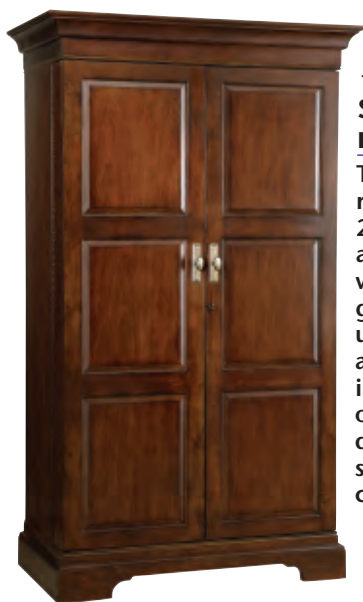
This floor clock features a delicately curved swan neck pediment which is crowned by a turned finial and decorative shell overlay.

H. 85-1/4" (217 cm)  
W. 22" (56 cm)  
D. 12-3/4" (32 cm)



11Z1 OATMEAL  
11Z2 PESTO  
**SOLID SAWGRASS MILLS  
OUTDOOR RUG BY  
HATTERAS HAMMOCKS**

8' x 10'



11Z52  
**SONOMA CABINET  
BY HOWARD MILLER**

This Hide-A-Bar™ cabinet features a raised door panel and room to store 22 wine bottles with a generous amount of room for liquor storage. A wooden stemware rack keeps wine glasses at convenient reach. An upper fixed shelf may hold glasses and tumblers. A 3x power strip outlet is located on the center shelf for operating small appliances. Two drawers provide ample utensil storage and feature quality dovetail construction with smooth running metal slides. Auto-on Light is a "smart" light switch that turns on automatically when a door is opened, and off when closed.

Locking door for added security. H. 68" x W. 43" x D. 23"

11Z58  
**GREENHOUSE  
BY RION**

Includes roof, base, side window, 2 automatic roof window openers, and ShadeNet kit - everything to get your greenhouse blooming!





11Z7

# **EMILY PATCH FULL/QUEEN BED SET BY DONNA SHARP**

Bright and colorful patched quilt with shades of pink, green, white, and yellow, 90" x 90". Two matching shams, 20" x 26 each. Fun and vibrant pink polka dot bedskirt, 54" x 75" x 18". Two white, pink and green decorative patched pillows, on 14" x 14" and one 16" x 16". Lightweight cotton throw, 50" x 60". Green and pink decorative pillow with overlapping button-close flap, 15" x 13".



11Z22 1/2 CARAT T.W.  
11Z38 3/4 CARAT T.W.  
11Z46 1 CARAT T.W.  
**GENUINE DEBEERS  
JOURNEY OF LIFE  
DIAMOND  
PENDANT**



11Z49  
**GENUINE  
DEBEERS 1/2  
CARAT T.W.  
DIAMOND  
SOLITAIRE  
PENDANT**

11Z16 1/2 CARAT T.W.  
11Z54 1 CARAT T.W.  
**GENUINE DEBEERS  
DIAMOND STUD  
EARRINGS**



LEVEL

7

11Z21

# **APPLE GREEN ECLECTRICS® COLLECTION BY HAMILTON BEACH**

Blender has stainless steel ice-crushing blades, 2 speed dial with pulse, large 48 oz. glass jar, 500 Watt motor, and revolutionary Wave-Action system.

Coffeemaker is a 12 cup capacity, advanced no-scorch heater, drip-free pouring, programmable clock/timer, 2 hour automatic shutoff, accelerated brewing, and pause & serve.

Drink mixer has commercial-grade mixing spindle, stainless steel mixing cup, tilt-back head, 2 speeds.

Stand mixer uses professional 2-way rotating mixing action, stainless steel 4.5 quart bowl, quick-release tilt-up head, pouring shield, 3 mixing accessories, locking bowl, 400 Watts.

Toaster features extra wide 1.5 " slots, shock-resistant concealed elements, bagel, defrost, reheat & cancel functions, auto shutoff, and slide-out crumb tray.

All are hand picked in a fresh apple green finish just for you!

